



"Tanks & pipes are our business"

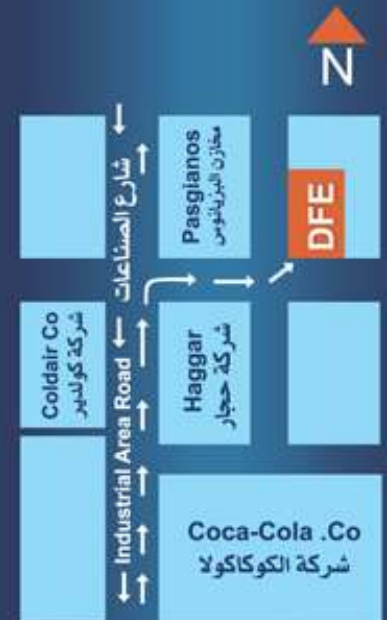
شركة معدات المستودعات
والمصانع المحدودة
شمم الهندسية



DEPOT & FACTORY
EQUIPMENT CO. LTD.

SHAMUM ENGINEERING





المنطقة الصناعية بحري

KRT. North, Industrial Area
P.O.Box: 10943 KRT. - Sudan
Fax: +249 185 314054
Phone: +249 155 887750/51
info@defshensd.com
defshen_2@yahoo.com

www.defshensd.com

INTRODUCTION

We are a private company established in 1987 provides a right service to downstream petroleum industry nevertheless the steel structure works.

WHO WE ARE ? *"TANKS & PIPES ARE OUR BUSINESS"*



OUR VISION

Is to be the best Sudanese service Company, Respected Regionally, As a consistency high performing, service provider to oil, gas and agricultural industry sectors.

OUR MISSION

Is To execute our projects, satisfy of our clients, while insuring that we meet shareholders & stakeholders expectations via the development of staff with a safe, positive and caring attitude. Focusing on sustaining & developing our competitiveness & capabilities.

WHAT WE DO ?

- Steel frames required for various construction and industrial applications.
- High-pressure vessels.
- Ferries & Pontoons.
- Small to medium size production lines.
- Modification of different transport means to suit required new jobs (e.g., road tankers, barges, pipeline heating system, etc).
- Supply of different equipments and auxiliaries needed for oil, steam, water transport and storage.



SPC Depot @ Alshejara

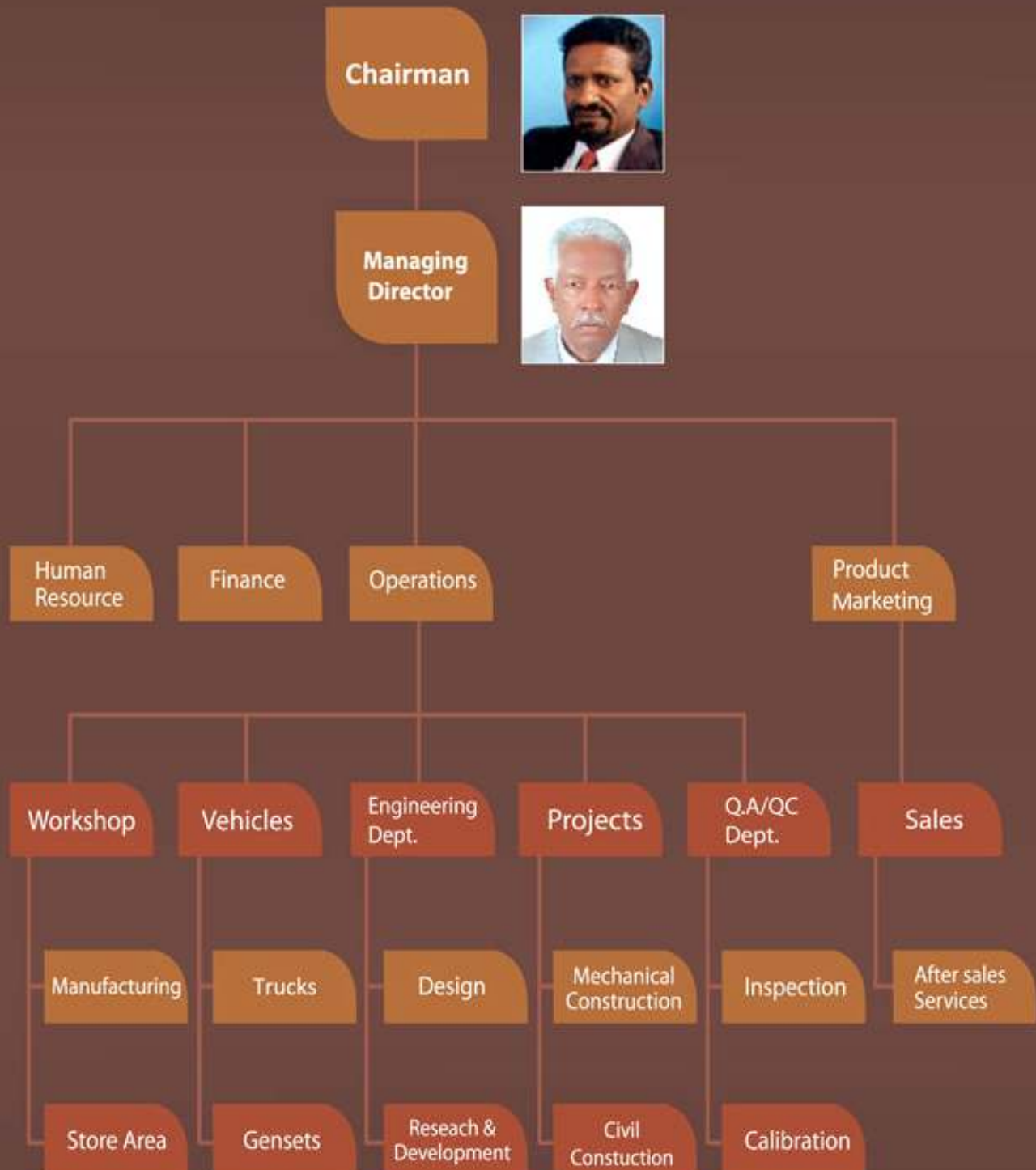


Tristar-Energy Depot @ El-Obied



Fuchs Depot @ Sawakin

Company Organizational Chart



HOW WE WORK ?

OUR STAFF

D&FE has recruited high caliber Engineers, Technicians and skilled workers both on regular and on-call-basis.

Several of our engineers have participated in many international forums and have maintained excellent reputation both in Sudan and abroad.



OUR EQUIPMENT

- Four portable cranes (7, 10, 25 & 40 tons load).
- Two HI-AB (2 & 6 tons load).
- Two pick up vans.
- Three trucks – 4.5 tons load.
- Three trucks – 7 tons load.
- Electric generators (27 to 250KVA).
- Five Diesel Driven Welding Machines.
- Supply of all necessary accessories for erection of tanks and piping systems.
- Our workshop is well equipped to meet all the required works with steel and other kind of metals.

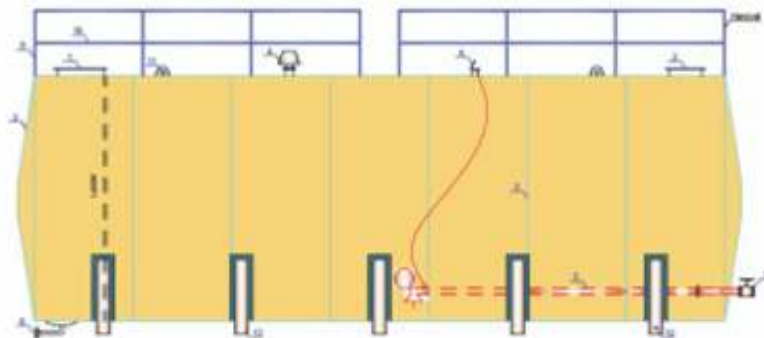
OUR ACTIVITIES

Cover a wide range of industrial and petroleum sectors requirements e.g. designing, fabricating, installation, erection and maintenance, such as:

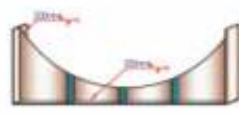
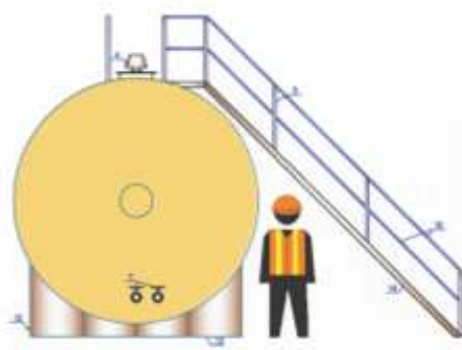
- Petroleum product storage facilities for oil production companies.
- Petroleum product depots for marketing and distribution oil companies and end users.
- Petroleum product road tankers.
- In-plant pipelines for petroleum, petroleum products, steam, and water.
- Water tanks for different industrial and services use.



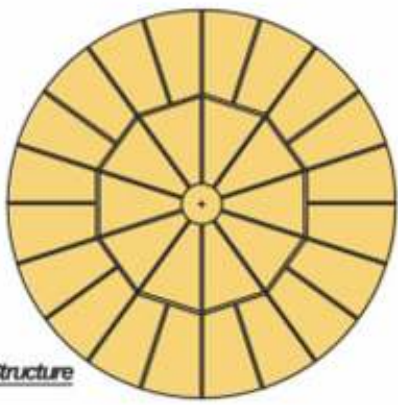
D&FE Tanks Design



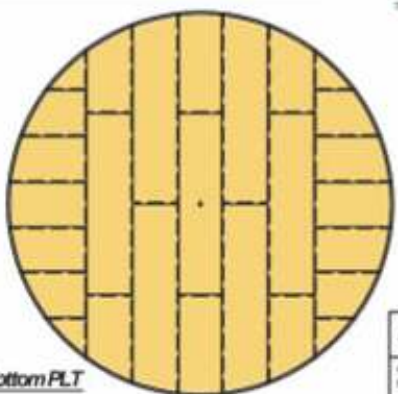
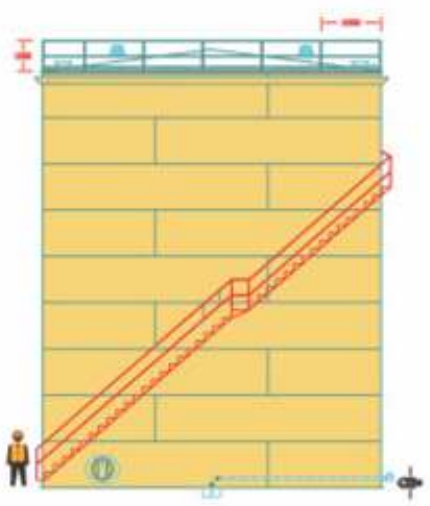
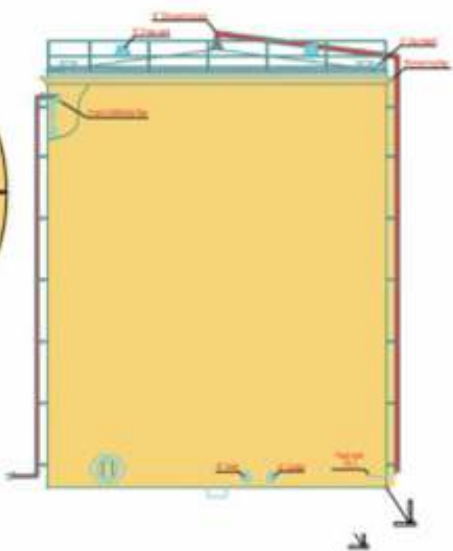
No.	Des.
1	700mm Manhole
2	500mm Manhole
3	6mm Sheet PLT
4	6" Free vent
5	4" Floating suction
6	4" Inspection hatch
7	2 x 4" Gate valve (Inlet & Outlet)
8	2" Sump drain
9	L 2"x2"x5mm
10	Ø1"
11	Lifting eye
12	Earthing boss
13	Skid
14	U-Channel 160mm
15	8mm thick
16	10mm thick



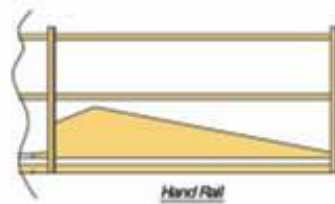
DEPT & FACTORY EQUIPMENT CO LTD	APPROVED BY: ANSOMUETWA	Sg.		DRAWING NOT TO SCALE	Tank Specification	
Client: BEE CO AFFORD KAYOKEBOT	PREPARED BY: NABLANZ	Sg.		No. of Page	3 of 5	ALL DIMENSIONS IN MM



Roof Structure



Bottom PLT



Hand Rail

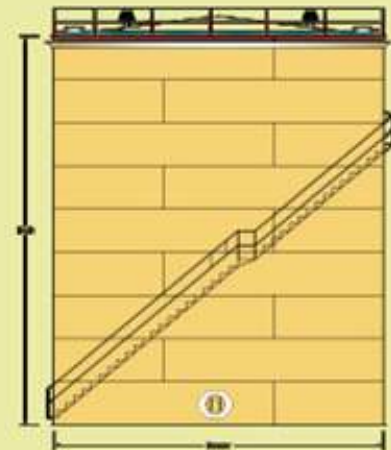


Side Manhole

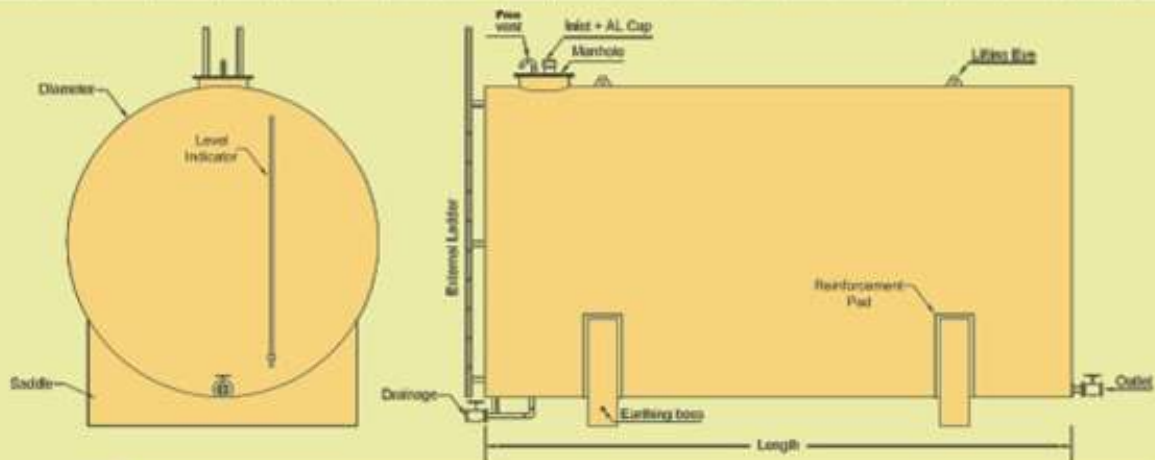
DEPT & FACTORY EQUIPMENT CO LTD	APPROVED BY: ANSOMUETWA	Sg.		DRAWING NOT TO SCALE	Roof structure, Side manhole & Hand rail	
Client: Nite Petroleum Co., JET - A1 Storage Tank	PREPARED BY: NABLANZ	Sg.		Location	S-04	ALL DIMENSIONS IN MM

D&FE Tanks Design

Dimensions & Shapes



Vertical Storage Tanks - STD Dimensions																								
Height (m)	Ø Diameter (m)																							
	4.77	5.73	6.68	7.63	8.59	9.54	10.50	11.45	12.41	13.36	14.32	15.27	16.23	17.18	18.14	19.09	20.05	21.00	21.96	22.91	23.87	24.82		
	Nominal Capacities in m³																							
	m³	m³	m³	m³	m³	m³	m³	m³	m³	m³	m³	m³	m³	m³	m³	m³	m³	m³	m³	m³	m³	m³	m³	m³
3.0	53	77																						
4.5	80	116	157																					
6.0	107	154	210	274	347	428	519	618	726															
7.5	134	193	262	342	434	536	649	772	907															
9.0	160	232	315	411	521	643	779	927	1,089															
10.5				480	608	750	909	1,081	1,270		1,691													
12.0							1,039	1,236		1,682		2,198	2,483	2,782	3,102			4,157						
13.5							1,169	1,390	1,633		2,175		2,794	3,130		3,865	4,264		5,115					
15.0							1,299	1,545		2,103		2,748	3,104							6,185			7,260	
16.5											2,658													
18.0															4,174								8,058	8,712



Horizontal Storage Tanks - STD Dimensions																
Length (m)	Ø Diameter (m)															
	0.95	1.11	1.14	1.32	1.50	1.59	1.67	1.62	1.75	1.90	2.39	2.54	3.18	3.66	3.81	
	Nominal Capacities in m³															
1.50	1															
2.25		2														
3.00			3	4	5											
3.75					6	7	8									
4.50								9	10							
5.25										13	22					
6.00												30	45			
7.50													59			
9.00														71	94	
10.50																119
12.00														95		136

SAFETY FIRST

In recent times there has been a global awareness for the need of safety policies in work places and construction sites.

For this reason our company has given top priority to adopting certain measures to ensure safe working conditions in order to prevent health hazards and damage to personal and third party properties.

D&FE has therefore introduced adequate safety procedures, which shall be strictly followed at all times.

“Safety first” should be the motto foremost in mind of all persons engaged in construction activities.

So let us boost our partnership with all this in mind and constantly improve the safety policies as we go along. The Management will provide all necessary facilities needed for safeguarding the employees; however it is the responsibility of the employees to co-operate with the Management in implementing the company policy.



SAFETY POLICY

This works just like the old saying “Prevention is better than cure”.

Using safety practices at all times rather than engaging in incorrect and unsafe procedures to speed up activities shall often lead to disastrous ends resulting in additional delays.

Putting health on top of priority list will automatically require that safety standards are not overlooked.

Accidents in work places and construction sites shall have adverse impact on health, life and environment not to mention property losses.



OUR SUPPLIES

- * Petroleum Pumps & Meters.
- * Valves API 602 – BS 5352: (Class 150, 300, 600 and 900).
(Ball valves, Gate valves, Check valves, Pressure valves, Pressure vacuum valves.)
- * **TANKS AUXILIARIES: (According to API & BS).**
 - Dip hatches.
 - Dip tapes.
 - Level indicators and switches.
 - Manholes + covers.
 - Floating roofs.
 - Floating suction arms.
 - Strapping instruments.
 - Vacuum box test instruments.
 - Standard nozzles.
 - Steam traps.
 - Earthing materials.
 - Pipes & Fittings according to API STD. (All schedules)
 - Hoses & Fittings according to API STD.
 - Loading Arms – different sizes.
 - Cathodic protection equipments & materials.
 - Spark proof equipment:
 - Electric Motors, Circuit Breakers & Starters.
 - Depot lightening lamps.
 - Quality assurance equipment.
 - Petroleum lines & pumps strainers.



TURNKEY DEPOTS

CAP (M³)	LOCATION	CLIENT
3,200	Atbra	R. Nile for Food Assurance
2,600	Atbra	Sidon Petroleum
1,800	Adar	Gulf Petroleum
80-800	Mellut	Gulf Petroleum
2,500	KRT Re nery	Eltiraifi Petroleum
3,600	KRT Re nery	Concorp International
8X100	R. Nile state	Zadna International
5,600	El-Obied	Tristar Energy - Sudan
13,100	Sinkat	Petrobash Multi-activities

AVIATION DEPOTS

CAP (M³)	LOCATION	CLIENT
310	Nyala Air Port	Nile Petroleum
135, 135 & 340	Damazine, Kassala & Juba Air Port	Shell Co
224, 224	Elobied, KRT airport	Nile Bakri Aviation
135	Merawi Dam	Nebta Petroleum
45	Khartoum	CFC/JMC
90, Upgrading Aviation Depot	Kadogli, Elfashir	PETRONAS
Piping net work (M. F, W.F.S)	KRT Airport	Nile Bakri
45	Tharjath Airstrip	Ram Energy
135	Juba Airport	Ministry Of Defense
20 Skid Mounted Tanks	Different	A.S. GP.
680	KRT Airport	Bee Petroleum
21, 50, 105 – 434	Malakal, Different	Tristar Energy - Sudan

OUR PRODUCTS

DISTRIBUTION NETWORKS

PROJECT	LOCATION	CLIENT
Tank wagon loading facilities	El-Obied	Gulf Petroleum
Tank wagon loading facilities	El-Obied	Aabirah transportation
Two Fuel Distribution networks	KRT North	SAYGA
Engineering works	Adar	PETRODAR Co.

PIPELINES

PROJECT	LOCATION	CLIENT
Crude Oil 4", 6" & 12" (17,500 ML)	Adar, Rabak	Gulf Petroleum
Different sizes from re nery to distribution center (6,000 ML)	KRT Re nery	Ministry of Energy
Water pipeline Ø800mm (6,720 ML)	River Nile State	Rehabilitation Unit
Supply & Installation of Loading System (Ø6"x 170 ML)	Elshajarah Depot	SPPC

FUEL PUMP STATION

Client	Location
Nile Petroleum	Wad Medani & Kassala
General Administration of Needs, Ministry of Defense	Wadi Sydna, El-Obied, Sinkat & Port Sudan
Norandi Investment Co. (Chiefs of Staff, Marine)	Osaif , Red Sea State

OUR WORKSHOP

The machine shop equipped with different sizes & types of :-

- ◆ Lathes.
- ◆ Milling M/C.
- ◆ Power Sheer.
- ◆ Radial Drill.
- ◆ Surface & Cylindrical Grinding Machines.
- ◆ Boring Machine.
- ◆ Slotting Machine.
- ◆ Bench Grinders
- ◆ 100 Ton Press Machine.
- ◆ Rolling Machines.
- ◆ Welding Machines (AC/DC).
- ◆ Petrogen Cutting System Sets.
- ◆ Variety of Hand Tools.



OUR GALLERY



NDT, Dye Penetrant



NDT, Vacuum Box Device



Tank Calibration



NDT, Ultrasonic Thickness Gauge



Ex. Sandblasting & Painting



In. Sandblasting



Tank Repainting

OUR GALLERY



MTN BTS Site, Khartoum



Master Tank Unit (TK, Pump & Meter)



Water Skid Tank, Albarary Poultry



MTN BTS Site, Khartoum



Floating Pontoon, R. Nile State

OUR GALLERY



Gold Mining, Sluice Box



Gold Mining, Sluice Box



Ring Conc. Foundation



Loading Rack @ MULT, Gulf Pet. Com



TRISTAR Energy Depot @ El-Obied



Fuchs Depot @ Sawakin

OUR GALLERY



Steel Const. "Truss", Nile River State



Steel Frame, Nile River State



Daily Service Tank, Sayga Flour Mills



SPC Depot @ Elshajarah



Vertical TK, Tristar Depot @ Obied



Horizontal Skid Tank

OUR GALLERY



Buildings, Tristar Depot @ Obied



Loading Gantry



Bee Pet. Aviation Depot @ KRT Airport



Fuel Pump Station



Elevated Water TK

OUR GALLERY



Asphalt Heating Unit



Cube Tank, CNPC



Irrigation Weir Gate



Asphalt Heating Unit

OUR CLIENTS

We Will Not Exist Without Them



OUR PARTNERS



Samples of our Partners Products